

# ENGINEERING STUDENT FORUM

Presented by Dean Manos Maragakis

April 16, 2019



College of Engineering

# Differential Fees Defined

Removed all course and laboratory fees for 300-, 400-, 600- and 700- level courses

- Added \$85 per credit for all 300- and 400- level courses
- Added \$100 per credit for all 600- and 700- level courses



# DIFFERENTIAL FEES CENTRAL FUND

FACULTY COMMITTEE 2018/2019



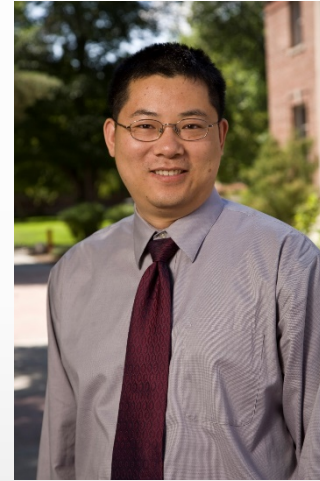
**ELIE HAJJ**  
*Committee Chair*  
CEE



**George Bebis**  
CSE



**BIN LI**  
CME



**XIAOSHAN ZHU**  
EBME



**YANYAO JIANG**  
ME



College of Engineering

# FACULTY SUB-COMMITTEE: CENTRAL FUND

- Comprised of five faculty members; one faculty member to represent each department.
- Appointments are for one academic year with two renewals possible.
- Faculty members chosen by the Chair of each of the five College of Engineering departments.



# DIFFERENTIAL FEE CENTRAL COMMITTEE: STUDENT MEMBERS

Candice Bauer serves as Chair



Logan  
Carlson - CSE



Garrett Van  
Mourik - EBME



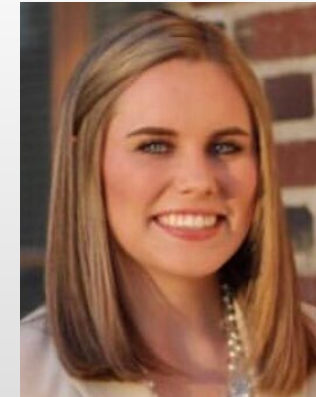
Connor Scully-  
Allison - Graduate  
Students



Moriah  
Munyan -CME



Thomas Bacon  
- ME



Savannah  
Hughes - CEE



# STUDENT COMMITTEE: CENTRAL FUND

## **You can get involved!**

- Five undergraduate students; and one graduate student.
- Appointments for one academic year.
- Students self-nominate in Fall! Then elected by student body in general election.



# DEPARTMENT COMMITTEES

- Departments also receive differential fee funds and have separate differential fee committees:
  - CEE
  - CME
  - EBME
  - CSE
  - ME
- Department committees are comprised of faculty and students.
- Please see your Department Chair if you would like to get involved on a department level!



# FUNDS AVAILABLE FY 2019: \$2,923,516\*

- Central Fund - \$1,354,860
- Civil & Environmental dept.- \$264,625
- Chemical & Materials Science dept.- \$144,072
- Computer Science dept.- \$347,608
- Electrical & Biomedical dept.- \$108,887
- Mechanical dept.- \$286,464
- Scholarship - \$417,000

\*as April 2019





# CENTRAL FUND

Differential Spending FY19 as of April 2019

<b>descriptions</b>	<b>dollars</b>
<b>FY 19 Revenue + FY 18 carry-over</b>	<b>\$1,354,860</b>
<b>Professional, Classified and LOA Salaries</b>	<b>\$439,991</b>
<b>Graduate Student Salaries</b>	<b>\$52,689</b>
<b>Wages</b>	<b>\$86,953</b>
<b>Fringe</b>	<b>\$127,135</b>
<b>General Operations &amp; Equipment</b>	<b>\$560,915</b>
<b>Funds remaining to be spent</b>	<b>\$87,177</b>



# CIVIL & ENVIRONMENTAL ENGINEERING

Differential Spending FY19 as of April 2019

<b>description</b>	<b>dollars</b>
<b>Total FY19 Revenue + FY18 Carry-over</b>	<b>\$264,625</b>
<b>Professional, Classified, &amp; LOA Salaries</b>	<b>\$13,362</b>
<b>Graduate Student Salaries</b>	<b>\$65,000</b>
<b>Wages</b>	<b>\$11,896</b>
<b>Fringe</b>	<b>\$20,911</b>
<b>General Operations &amp; Equipment</b>	<b>\$117,088</b>
<b>Travel</b>	<b>\$4800</b>
<b>Funds remaining to be spent</b>	<b>\$31,568</b>



# CHEMICAL & MATERIALS ENGINEERING

Differential Spending FY19 as of April 2019

<b>description</b>	<b>dollars</b>
<b>FY 19 Revenue + FY 18 carry-over</b>	<b>\$144,072</b>
<b>Professional, Classified and LOA Salaries</b>	<b>\$31,362</b>
<b>Graduate Student Salaries</b>	<b>\$7,125</b>
<b>Fringe</b>	<b>\$5,011</b>
<b>General Operations &amp; Equipment</b>	<b>\$19,165</b>
<b>Funds remaining to be spent</b>	<b>\$81,409</b>



# COMPUTER SCIENCE & ENGINEERING

Differential Spending FY19 as of April 2019

<b>Descriptions</b>	<b>dollars</b>
<b>FY 19 Revenue + FY 18 carry-over</b>	<b>\$347,608</b>
<b>Professional, Classified and LOA Salaries</b>	\$48,826
<b>Graduate Student Salaries</b>	\$69,953
<b>Wages</b>	\$19,424
<b>Fringe</b>	\$29,636
<b>General Operations &amp; Equipment</b>	\$65,829
<b>Transfers to Faculty Start up funds</b>	\$90,000
<b>Funds remaining to be spent</b>	\$23,940



# ELECTRICAL & BIOMEDICAL ENGINEERING

Differential Spending FY19 as of April 2019

<b>descriptions</b>	<b>dollars</b>
<b>FY 19 Revenue + FY 18 carry-over</b>	<b>\$108,887</b>
<b>Professional, Classified and LOA Salaries</b>	<b>\$35,212</b>
<b>Fringe</b>	<b>\$9,187</b>
<b>General Operations &amp; Equipment</b>	<b>\$57,062</b>
<b>Funds remaining to be spent</b>	<b>\$7,426</b>



# MECHANICAL ENGINEERING

Differential Spending FY19 as of April 2019

<b>Descriptions</b>	<b>dollars</b>
<b>FY 19 Revenue + FY 18 carry-over</b>	<b>\$286,464</b>
<b>Professional, Classified and LOA Salaries</b>	<b>\$143,141</b>
<b>Graduate Student Salaries</b>	<b>\$421</b>
<b>Wages</b>	<b>\$28,582</b>
<b>Fringe</b>	<b>\$37,676</b>
<b>General Operations &amp; Equipment</b>	<b>\$51,465</b>
<b>Funds remaining to be spent</b>	<b>\$25,179</b>



# ENGINEERING TUTORING CENTER

**\$91,523** Allocated to the Tutoring Center  
Since August 2018, we have had **1388** visits  
from **282** students. Since October 2013, we  
have had **12,560** visits from **2,479**  
students. We have **15** tutors, **1** manager and  
**4** staff working the front desk with over **80**  
courses available for tutoring.  
WebCampus/Canvas presence in Engineering  
Student Resources.



## Hours of Operation:

Monday through Thursday: 8:30am to 7:00pm

Friday: 8:30am to 5:30pm

Location: EJCH 108H



College of Engineering

# ENGINEERING LEADERSHIP COUNCIL (ELC)

- \$75,000 allocated to ELC for Student Club Support for the next 3 years.
- ELC is made up of 26 clubs
  - Supplemental funding source
  - Clubs submit formal request with invoice quotes
  - Engineering Leadership Council (ELC) votes to approve or deny requests (yes, denials happen)
  - *Most requests for professional conference attendance and competition.* Rest of monies are spent for club events & recruitment





# BREAKDOWN OF ELC CLUBS RECEIVING FUNDING

Description	Club	dollars
American Institute of Aeronautics and Astronautics (AIAA)	Aerospace	6884
American Institute of Chemical Engineers (AIChE)	Chemical	3210.59
American Nuclear Society (ANS)	Chemical	6817.84
American Society of Civil Engineers (ASCE)	Civil	1691.4
American Society of Mechanical Engineers (ASME)	Mechanical	0
Association for Computing Machinery (ACM)	Computer Science	5400.13
BioMedical Engineering Society (BMES)	Chemical	290
Concrete Canoe (CANOE)	Civil	8638.51
Electrical Engineering Grad Student Club (EE-GSC)	Electrical	0
Engineering Leadership Council (ELC)	-	1098.59
Geowall	Civil	2075.48
Human Powered Vehicle Team (HPVT)	Mechanical	7534.66
Institute of Electrical and Electronics Engineers (IEEE)	Electrical	4086



# BREAKDOWN OF ELC CLUBS RECEIVING FUNDING CONTINUED

<b>Description</b>	<b>club</b>	<b>dollar</b>
<b>John Mackay Club (JMC)</b>	Mining	\$2325.48
<b>Mackay Muckers</b>	Mining	\$0.00
<b>Nevada Cyber Club (cyber)</b>	Multi Disciplinary	\$0.00
<b>N-SATT</b>	Aerospace	\$231.43
<b>Pi Sigma Rho (PSR)</b>	Professional	\$1733.80
<b>Pi Tau Sigma (PTS)</b>	Professional	\$747.84
<b>Robotics &amp; Electronics Clubs (REC)</b>	Electrical	\$4474.15
<b>Society of Women Engineers (SWE)</b>	Professional	\$445.20
<b>Steel Bridge</b>	Civil	\$6519.10
<b>University of Nevada Rocketry Society (ROCKETRY)</b>	Aerospace	\$2406.91
<b>Water Treatment (H2O TX)</b>	Civil	\$2212.26
<b>Wolf Pack Racing (WPR)</b>	Mechanical	\$3711.03
<b>Women Into Computer Science and Engineering (WISCE)</b>	Computer Science	\$2465.60
<b>Sum</b>		\$75,000.00

# COLLEGE OF ENGINEERING CAREER SERVICES



**Joe Bozsik**

Director of Career  
Services

\$81,540 allocated to career services.

One-on-One Career Advising|Career Workshops & Presentation.

Résumé reviews, practice interviews, job search skills and guidance

Fall & Spring College of Engineering Internship & Career Fairs each September and February

College of Engineering Online Job Board

We maintain an engineering and computer science only internship and job board where you can find many opportunities



College of Engineering

# COLLEGE OF ENGINEERING WEB AND MARKETING



**Kirstin Swagman**

Web Communications

\$90,717 allocated (50% from Central Fund and 50% from all departments)

## Websites

20 total Engineering websites in University's content management system.

2 new sites in 2018-2019; maintenance on approximately 1,000 pages

Support for personal faculty websites on WolfWeb and PackPages

Launched redesigned College of Engineering, Computer Science & Engineering websites. More redesigns coming over the rest of 2019.

## Marketing Communications

Nevada Engineering Magazine

NevadaToday news stories/press releases for research & College accomplishments; published online and social media promotion

E-Newsletters for the College and departments

Graphic design & event promotion supporting College programs and events, including Innovation Day, Spring Celebration, K-12 Outreach and Recruitment

Digital advertising campaigns for recruitment and select events such as Innovation Day, Summer Camps



College of Engineering

# COLLEGE OF ENGINEERING ADVISING CENTER



**Syreeta Williams**  
Academic Advisor



**Etzal Corona Padilla**  
LOA

\$91,382 allocated to academic advising center.

Includes:

- Academic Advisor Syreeta Williams
- Student wages
- Office support
- LOA Etzal Corona Padilla



# COLLEGE OF ENGINEERING TECHNICAL EDITOR



**Joanna Trieger**  
Technical Editor

- \$77,894 allocated (50% from Central Fund and 50% from departments)
- Why a technical editor?
  - Better proposals → More research funding → More opportunities for student involvement in research
- **Editing:** Increases likelihood of research proposals getting funded by improving readability and strength of argument
  - 67 distinct proposals edited during 2018
  - **Funded proposals:** Edited proposals that received funding include \$1m engineering education proposal to NSF, \$500k+ electrical engineering proposal to NSF, \$300k+ civil engineering proposal to NDOT, \$175k computer engineering proposal to NSF, and many others
- **Skills development:** Improves faculty proposals through writing workshops
  - Five workshops developed in 2018, including one delivered to students during Research Experience for Undergraduates session



# GRADUATE RESEARCH ASSISTANTSHIPS FOR DOCTORAL STUDENTS

- \$65,000 allocated
- Five departments received one-year research assistantships:
  - Civil & Environmental – Hamed Hasani
  - Computer Science & Engineering – Tim Mott
  - Electrical & Biomedical – Soeib Heydari
  - Mechanical – Siavash Sharifi
- Recruit highly qualified doctoral candidates allowing for an increase in research production, course offerings and program reputation.





# EQUIPMENT AND OPERATING EXPENSES

<b>Description</b>	<b>dollars</b>
<b>ENGR 301 Student Assistants</b>	<b>\$18,000</b>
<b>ENGR 691/ENGR 301 course supplies</b>	<b>\$5,000</b>
<b>International Student Exchange Support</b>	<b>\$8,000</b>
<b>ENGR 100 course supplies/resources</b>	<b>\$10,000</b>
<b>Transfer Central Fund to Department ENGR 360/701</b>	<b>\$35,000</b>
<b>Faculty cybersecurity zone</b>	<b>\$59,400</b>
<b>Upgrade to undergrad teaching lab (Dr. Pagilla)</b>	<b>\$15,000</b>
<b>CHE teaching lab (Dr. Kvistik)</b>	<b>\$34,000</b>
<b>Computer Aided Manufacturing (Dr. Wang)</b>	<b>\$33,534</b>
<b>COMSOL Multiphysics Software (Dr. El Zaklit)</b>	<b>\$9,080</b>





# EQUIPMENT AND OPERATING EXPENSES CONTINUED

<b>Description</b>	<b>dollars</b>
<b>Expanding Robotics (Drs. La, Louis, Nicolescu, Feil-Seifer)</b>	<b>\$35,000</b>
<b>Asphalt Materials Evaluation System</b>	<b>\$20,000</b>
<b>High Performance Computing (Zach Newell)</b>	<b>\$30,000</b>
<b>3D Printer Fiber Reinforced Composites (Dr. Fan)</b>	<b>\$6,749</b>
<b>Interdisciplinary Traffic Env. (Drs. Xu &amp; Alexis)</b>	<b>\$63,301</b>
<b>Wind Tunnel Force Balance (Dr. Mustafa &amp; Seth Draper)</b>	<b>\$7,250</b>
<b>Welding table for manufacturing lab (Nick Maus)</b>	<b>\$10,500</b>
<b>Equipment ME 322 Lab (Dr. Mustafa Nacer)</b>	<b>\$9,700</b>
<b>Equipment ME undergrad labs (Dr. Ramachandran)</b>	<b>\$10,800</b>
<b>BME Teaching Lab</b>	<b>\$52,874</b>
<b>New Faculty Training Workshop</b>	<b>\$8,000</b>

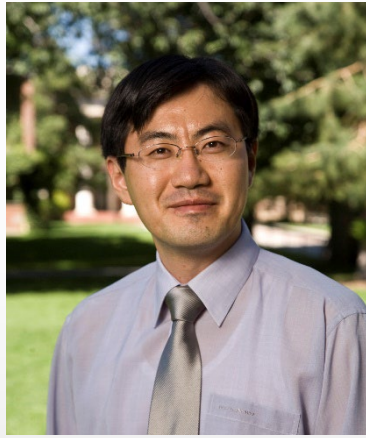


# PROFESSORS PARTIALLY OR FULLY FUNDED BY DIFFERENTIAL FEES



**Mike Kivistik**

CME



**Jihwan Yoon**

EBME



**Nick Tsoulfanidis**

CME - Nuclear Expert



College of Engineering

# LECTURERS PARTIALLY OR FULLY FUNDED BY DIFFERENTIAL FEES



**Kelly Doyle**  
ENGR Lecturer



**Angelina Padilla**  
ME Lecturer



**Rahul Ramachandran**  
ME Lecturer



# Thank You!



College of Engineering