



Progress Notes: Moving Forward but Pausing to Celebrate

Welcome to the Department

I want to take this opportunity to wish you all a wonderful holiday season and to send you another update on the Department of Psychology. The last year has continued to be a bit of a roller coaster, and we face a number of uncertainties in the coming year. While the university has faced various stresses and strains related to our budget, the faculty remains committed to their support of our students at the graduate and undergraduate levels. We have hired a new faculty member, Dr. Marian Berryhill, who is profiled in this newsletter. She is a bundle of energy, and we can already feel her positive impact on her program and the department. In another transition, Dr. Gardner has retired after 47 years of service to the department. Details of a symposium that celebrated his work are presented at the bottom of this page.

We can also celebrate continued confirmation of the strength of our programs. The Behavior Analysis program continues to shine, and this year they were given the "Enduring Programmatic Contributions Award" by the Society for the Advancement of Behavior Analysis. In other good news, the Clinical Psychology program has ranked in the top 50 in the US News "Best Graduate Schools" rankings. These are just a few of our bright moments this year. The articles in the newsletter highlight other individual and program accomplishments.

While we can be pleased about the strength of our programs, we face many financial difficulties. I know that there are a number of important causes that you are called on to support, and that most of us feel a bit limited in our resources this year. However, student funding is more important than ever and we need your help. If you are able to make a donation to any one of our student scholarship programs, I would greatly appreciate it. The last page of our newsletter lists our various scholarships and gives information on how to contribute. This year the department was able to provide support to graduate students to present their research at national conferences; however, without additional funding we may not be able to continue this support. Thank you for your support, and as always, please contact me if you have any questions or concerns about the department.



Dr. Victoria Follette,
Department Chair

Special Symposium Celebrates Professor Gardner's Retirement



Dr. R. Allen Gardner

In 1963 two young scholars, R. Allen and Beatrix T. Gardner, moved from Wellesley, Massachusetts to Reno, Nevada and the University of Nevada Psychology Department. In 1966 they were joined by an infant chimpanzee who they named Washoe after the county in which she was to be raised. Washoe was the first of several cross-fostered chimpanzees (chimpanzees raised in a human family environment) in this pioneering research on inter-species communication. In the 1970s four other infant chimpanzees (Moja, Pili, Tatu, and Dar) were "adopted" as the project expanded. Earlier researchers had tried inter-species communication with a vocal language and had very limited success. The Gardners' reasoned that the relative lack of success may have been related to limitations of the chimpanzee vocal apparatus for producing human speech sounds. By shifting to a recognized language of hand

signs used by hearing impaired humans (American Sign Language) they demonstrated remarkable levels of inter-species communication between chimpanzees and humans; and later between

Continued on Page 5

Inside this Issue:

Gardner Symposium	1, 5
Dr. Marian Berryhill	2
New Undergraduate Advisor	2
Psychological Services Center	3
BA Satellite Program	3
BA Program Award	4
Dr. Ruth Anne Rehfeldt	4
Clinical Program Ranking	4
Autism Research	5
Faculty Profiles	5-6
How to Donate	7



New Face in the Department: Dr. Marian Berryhill

The Department of Psychology welcomes Dr. Marian Berryhill. Dr. Berryhill joins us most recently from a four-year postdoctoral position at the University of Pennsylvania and Temple University. She attended graduate school at Dartmouth College and earned her doctorate in cognitive neuroscience, the study of brain and behavior. She received her undergraduate training at Hamilton College.

Dr. Berryhill is interested in questions related to memory: How do we remember what we remember? What parts of the brain are necessary to hold onto items over the short- and long-term? What happens to memories when the brain is damaged? How do we mentally ‘Travel through Time’ to revisit our past, evaluate our present and predict our future?

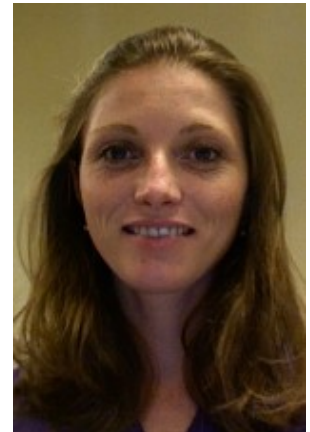
To investigate these exciting questions, Dr. Berryhill uses a variety of experimental methodologies. She uses behavioral methods to test participants’ ability to remember the identity, the location, or the identity-location conjunction of items in short-term memory. For example, participants may see several objects flashed sequentially on a computer monitor. After a short delay a probe image would appear. Participants could be asked: a) was that item in the original set of stimuli?; b) was that spatial position occupied in the original set?; c) was that particular item in that position?; d) was that item 2nd? ; e) how confident are you in your memory?

When these kinds of studies are conducted in patients with brain lesions we can draw conclusions about the parts of the brain that are necessary for different aspects of short-term memory. In other words, a patient participant might be able to answer questions a, b and c, but not d. This would suggest that the lesioned tissue is important for some types of short-term memory, but not others. In turn, this type of information helps our understanding of how the brain stores and accesses information.

Other studies make use of trans-cranial direct current stimulation, the application of safe, low levels of direct current to the scalp. Depending on the stimulation settings, performance on a task may be slightly improved or slightly impaired – but only if the stimulated cortex is involved in the experimental task. In these studies, healthy adults perform the same task with and without stimulation. This means that each participant serves as his own control participant.

Finally, she also uses functional neuroimaging (fMRI) to identify networks of brain activations involved in memory tasks. These experiments will occur off-site until UNR gains research MRI capacity.

If you would like information about participating in experiments, Dr. Berryhill’s research, or even to read some of her publications – check out her faculty webpage: <http://www.unr.edu/psych/faculty/berryhill.html>. Dr. Berryhill would also be happy to speak to your organization about her research, or cognitive neuroscience in general.



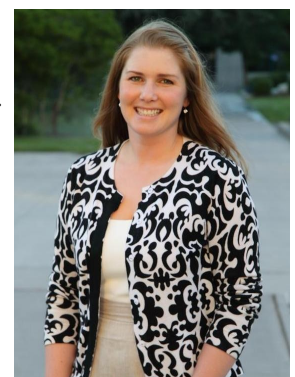
Dr. Marian Berryhill
Assistant Professor

New Undergraduate Academic Advisor

Our new academic advisor for the Psychology Department is Genevieve DeBernardis, a doctoral student in the Behavior Analysis Program at UNR. During her undergraduate training at Montana State University, Bozeman, she began to realize the importance of academic advising. Genevieve recalls how relieved she felt to find an academic advisor who genuinely supported her goal of completing a B.S. in Cell Biology and Neuroscience and a B.F.A. in Studio Art. Currently, Genevieve is investigating a complex form of perspective taking, demonstrating the capacity of very young children to predict novel behavior of a peer as a result of a shared history.

As an academic advisor, Genevieve can provide students with the assistance needed to fulfill all university, college, and departmental requirements in order to graduate in a timely manner. She’s also available to help students determine what they can do to make themselves competitive when applying to graduate school or when preparing for a career in psychology.

For more information about Psychology Department advising, go to: www.unr.edu/psych/advising. To make an appointment with Genevieve, either stop by the Psychology Department office at MSS 438 or call 775-784-6828 opt. 2. If you have a quick question, try sending an email to Genevieve directly at psyvice@unr.edu.



Genevieve DeBernardis

Psychological Services Center Moves to New Location

The Psychological Services Center (PSC) is a community-oriented mental health service center that is part of the doctoral program in clinical psychology at the University of Nevada, Reno (UNR). The PSC provides evidence-based psychotherapy for a variety of mental health issues to residents of Northern Nevada as well as students attending UNR. The PSC offers sliding scale fees, which allow low-income clients to receive services that they may otherwise find inaccessible. The professional staff members at the PSC include clinical psychologists who are faculty members and graduate students from the doctoral program in clinical psychology at UNR. The clinical faculty provide supervision to the graduate students as they carry out their clinical training through direct service provision in the PSC.

The evidence-based therapies provided by the PSC include Acceptance and Commitment Therapy (ACT), Behavior Therapy, Cognitive-Behavior Therapy (CBT), Dialectical Behavior Therapy (DBT), Functional Analytic Psychotherapy (FAP), and Mindfulness-Based treatment programs. Many of the innovative treatments offered through the PSC are continuously researched and built upon by the faculty and graduate students from the clinical psychology program.

The PSC provides a wide range of psychological services, including treatments for mood disorders, anxiety disorders, grief, trauma (including childhood sexual abuse), domestic violence, spouse abuse, couples therapy, dementia, chronic suicidality, behavioral problems, emotional problems, difficulties in interpersonal relationships, and management of chronic pain and chronic health problems. Psychological services are evaluated throughout the therapy process to ensure that clients are provided with the most effective treatments available.

In fall of 2009, the PSC moved to a new location on the UNR campus: Edmund J. Cain Hall Room 206. The new center space is open and inviting while still providing privacy to individuals seeking psychological services. The space has been outfitted with modern recording equipment and elegant up to date décor. It is spacious enough to provide dedicated rooms for group therapy and clinical supervision meetings while still allowing for future expansion of services to the local community. We would like to extend our gratitude to everyone who assisted in making the PSC relocation a reality and in transforming it into a welcoming and warm place for both clients and staff. We are looking forward to continuing to serve the greater Reno community.

Another Cohort Graduates from Behavior Analysis Satellite Program

The Satellite Programs in Behavior Analysis offer a unique opportunity for students in that programs of study are delivered at off-campus locations around the country under the sponsorship of human service agencies, businesses and other organizations. The aim of these programs is to provide opportunities for training in behavior analysis in regions where such training is unavailable or inaccessible to fully employed persons seeking career advancement. Training is delivered face-to-face at sponsor's worksites, on-line, or by a

combination of these modes of delivery as suited to sponsors' interests and students' needs. The University of Nevada, Reno has been delivering Satellite Programs in Behavior Analysis since 1995. To date, nine cohorts of students in four US states and Canada have graduated with master's degrees through this program.

On August 28, 2010 a commencement ceremony was held in San Gabriel, California, celebrating the accomplishments of twelve recent graduates of the University of Nevada, Reno Satellite Program. Particularly notable was that over the past three years all of these graduates worked toward the completion of their degree while fully employed at SEEK Education, Inc., including five students who completed their degrees remotely as they were located in Japan or Taiwan. SEEK Education is especially well prepared to serve the diverse community in southern California as many of their staff are multilingual. Select graduates were recognized for their exceptional performance. The outstanding graduate was Allegra Turner, and awards were presented to Allegra Turner and Jennifer Chin for their exceptional research projects. Four members of the Behavior Analysis faculty, Drs. Mark Alavosius, Linda Hayes, Ramona Houmanfar and Larry Williams, and the Assistant to the Satellite Program Director, Genevieve DeBernardis, attended the ceremony.

The Summer 2010 Graduates included: Chih-liang Chen, Hui-Hung Chen, Jennifer Chin, Yunju Huang, Janice Mislang, Daniela Ortiz, Jie Shao, Xuyen To and Allegra Turner. The Fall 2010 Graduates will include: Minobu Hasegawa, Masanori Ishibashi, and Shu-Hwei Ke.



BA Faculty and 2010 Graduates



Behavior Analysis Program Celebrates 20th Birthday with Prestigious International Award

The Behavior Analysis Program in the Department of Psychology this year celebrates its 20 years at UNR and its successful award of its 3rd 5-year accreditation from the Association for Behavior Analysis International (ABAI). In May 2010 the program was also awarded the prestigious “*Enduring Programmatic Contribution Award*” by the Society for the Advancement of Behavior Analysis (SABA). In the 36 year history of the SABA awards only 5 academic programs have been recognized for their sustained contributions to behavioral science via teaching, scholarship, research, and service. As the President of ABAI, Dr. William Heward (Ohio State University) stated in his introduction to the award ceremony, the award winners are essentially representatives of an elite “Who’s Who” of Behavioral Psychology. Receipt of this prestigious program award signals the outstanding accomplishments of the UNR Behavior Analysis Program. Its status among the best schools in Behavior Analysis in the world is cause for celebration!

In accepting their award, the current faculty of the program, Drs. Mark Alavosius, Patrick Ghezzi (past Director), Linda Parrot-Hayes (Founding Director), Ramona Houmanfar, and W. Larry Williams (Director), presented a brief history of the program, its development and academic productivity along with commentary and milestones over the longevity of the program. Also contributing to the program as faculty have been Steve Hayes, Jim Carr, Ted Boyce, and Michelle Wallace. For more details regarding the program please visit its web pages at <http://www.unr.edu/psych/behavior/index.html>.



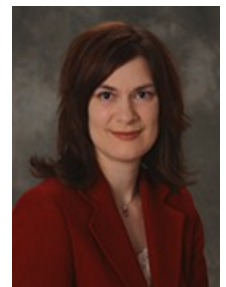
BA Faculty and ABAI President Dr. William Heward

Clinical Psychology Program Receives High National Ranking

Congratulations are in order for the faculty and students of the UNR clinical psychology program! The latest *U.S. News* “America’s Best Graduate Schools” rankings were published April 15, 2010. UNR’s clinical program was ranked 43rd among the 210 accredited clinical psychology programs in the nation. This is an excellent ranking reflective of the dedication and high quality of everyone involved with the program. It also demonstrates the great esteem with which many other academics view the program, as the rankings were assigned based on surveys of experts in the field of clinical psychology (e.g., college deans, program directors, and senior faculty). Other clinical psychology programs receiving the same ranking included high-quality programs at other universities: Florida State University, Purdue University, Rutgers, SUNY-Albany, SUNY-Buffalo, and the University of Rochester.

Department Graduate Named “Outstanding Scholar”

In 2010, Dr. Ruth Anne Rehfeldt, BCBA was recognized as the “Outstanding Scholar” of the SIUC College of Education and Human Services in its *Journeys* magazine. Dr. Rehfeldt received her doctorate from the UNR Behavior Analysis Program in 1998. She is currently a professor in the Rehabilitation Institute at Southern Illinois University, Carbondale (SIUC). Her academic accomplishments include the publication of 75 scholarly articles and one co-edited book. She is also editor of *The Psychological Record* and a member of the editorial boards of 8 other journals. An electronic copy of the *Journeys* publication, including a description of Dr. Rehfeldt’s work and many accomplishments can be accessed at: <http://ehs.siu.edu/journeymag.php>.



Dr. Ruth Anne Rehfeldt



Gardner Symposium, continued from Page 1

chimpanzees and chimpanzees. Almost immediately, the data and filmed results of a chimpanzee communicating in American Sign Language drew national and international recognition and acclaim, and the research excited scholars across many disciplines and people from all walks of life. We lost Trixie Gardner in 1995; and in April of this year, a special symposium was held on campus honoring R. Allen Gardner on the occasion of his retirement after a 47-year teaching and research career at the University of Nevada.

The celebration symposium was held on Friday, April 30, 2010, and of course, the theme was sign language studies of cross-fostered chimpanzees. Keynote addresses were given by Professor Roger Fouts (a former student of the Gardners) and Professor Sherman Wilcox (a distinguished linguist at the University of New Mexico). Conference presentations were all given by former Gardner students (Drs. Mark Bodamer, Valerie Chalcraft, Mary Lee Jensvold, Matt Scheel, and Heidi Shaw). This well-attended symposium was made possible by the generous support from the Hilliard Foundation and College of Liberal Arts, the College of Science, the Department of Biology, the Department of Psychology, and from the "Friends of Washoe" foundation.

Faculty Member Conducts Award-Winning Autism Research

Along with graduate student Thomas Avino, Dr. Jeffrey Hutsler received the Slifka/Ritvo Innovation in Autism Research Award at the 2010 International Meeting for Autism Research. Using postmortem brain tissue samples, the pair of researchers developed a way to measure cell patterning in the cerebral cortex of individuals with autism. Their findings suggest that the brains of individuals with autism have less distinct boundaries between cerebral cortex and white matter than the brains of those of typical development.

Dr Hutsler also recently completed another study examining the biological underpinnings of autism. He and post-doctoral student Hong Zhang (now a faculty member at Wuhan university in China) used postmortem tissue samples to demonstrate short-range over-connectivity of neurons in the outer layer of brain's cortex in individuals with autism. This research was funded by the National Alliance for Autism Research and was published in the journal, *Brain Research*.

It is hoped that, by identifying the biological bases of autism, abnormal developmental processes can be corrected through early intervention. These research studies both demonstrate how Dr. Hutsler's work is at the cutting edge of the investigation and potential future treatment of autism.



Dr. Jeffrey Hutsler
Assistant Professor

Faculty Profiles and Interests:

Mark Alavoisus, Ph.D. – Instructional materials, incentive/reinforcement/feedback systems, data control technologies & decision support tools, web-based communities & support networks, occupational health and safety, entrepreneurial business, academic & job training, green behavior, management/leadership, sports & fitness

Marian Berryhill, Ph.D. – Internal attention, improving memory, effects of brain damage on memory

Gideon Caplovitz, Ph.D. – Interaction of visual processes in perception, effects of local and global visual processes on perception, functional organization of the visual system, effects of conscious experience on underlying neurological processes

Michael A. Crognale, Ph.D. – Genetics of color vision, visual electrophysiology and psychophysics, comparative color vision, development and aging of vision, using color vision deficiencies to assess neural integrity in pathology

and physiological stress, vision in aviation

Deborah Davis, Ph.D. – Witness memory, false confessions, issues of sexual consent, rules of evidence, jury research.

Melanie Duckworth, Ph.D. – Physical injuries, traumatic stress reactions, chronic pain, physiological reactivity to stress, coping styles and strategies, risk behaviors and risk perception

Continued on Page 6



Faculty Profiles and Interests (continued)

Jane Fisher, Ph.D. — Behavioral health and aging, clinical functional analysis, Alzheimer’s disease and related dementias, evidence based behavioral healthcare in primary and long term care settings, family caregiving, depression and suicide risk in older adults, prevention of elder abuse, grief and bereavement

Victoria M. Follette, Ph.D. — Trauma, psychotherapy outcome, mindfulness-based therapy, dating violence

William Follette, Ph.D. — Psychotherapy outcome, behavioral research methodology, clinical behavior analysis

Alan Fruzzetti, Ph.D. — Interpersonal & family models of psychopathology, relationship between family interaction and emotion regulation, interpersonal processes, Dialectical Behavior Therapy with individuals, couples and families, mental health systems intervention, training in service delivery and evaluation,

Patrick Ghezzi, Ph.D. — Early intensive behavioral intervention for autism, slot machine play in natural and artificial gaming environments, behavior theory and philosophy

Linda Hayes, Ph.D. — Behavioral theory and philosophy, the analysis of complex behavior, including verbal behavior, imagining, dreaming, thinking, remembering, and feeling, response substitution, rule governance, relational responding, stimulus substitution, habituation, animal modeling, automated shaping, degenerative diseases, psychoneuroimmunology

Steven Hayes, Ph.D. — Acceptance and Commitment Therapy, Relational Frame Theory and the behavioral analysis of language and cognition, acceptance and mindfulness, values and commitment

Holly Hazlett-Stevens, Ph.D. — Chronic anxiety and worry, Mindfulness-Based Stress Reduction, anxiety and stress-related physical conditions

Ramona Houmanfar, Ph.D. — Organizational behavioral management, instructional design, cultural analysis, experimental analysis of human behavior

Jeffrey Hutsler, Ph.D. — Cortical organization in autism spectrum disorders, development and organization of human auditory and language-associated cortical regions, comparative organization of the supragranular

layers, the microanatomical structure of human auditory and language-associated cortices.

William O’Donohue, Ph.D. — Sexual abuse, behavioral healthcare delivery, male sexual misbehavior, behavior therapy, philosophy of psychology.

Anthony Papa, Ph.D. — Treatment, etiology and course of pathological and normal grief, the social and emotional factors that contribute to adjustment to adversity, the function of positive emotion, internet based delivery of empirically supported treatment

William Wallace, Ph.D. — Memory, spoken word recognition, statistics

Michael Webster, Ph.D. — Color and form perception, face recognition, perceptual adaptation, vision and the natural environment

W. Lawrence Williams, Ph.D. — Conditional discrimination processes in persons with developmental disabilities, organizational behavior management in human service settings, staff training, assessment of and clinical interventions for behavior disorders in the developmentally disabled populations, behavioral consultation

Let us know about you by filling out this card and mailing it to:

University of Nevada, Reno
Department of Psychology
Mail Stop 296
Reno, NV 89557-0296

Name: _____

Occupation: _____

Tell us about yourself:



How to Donate to the Department and its Affiliated Scholarship Programs

The UNR Department of Psychology strives to further the academic and humanitarian aims of our programs by celebrating the breadth, diversity, and scholarly aspects of our field. To this end, several programs have been established to accomplish these goals.

- Professor Jim Mikawa, who spent 27 years in the Department of Psychology, directed that upon his death, a foundation should be created at the University of Nevada, Reno for the purpose of establishing an ethnic minority fund for graduate students in the clinical psychology doctoral program.
- The Paul Mceynolds Foundation facilitates a program that attempts to progress scholarly knowledge and debate during an annual program in which distinguished representatives from various areas of the psychological field are invited to conduct a two day workshop in which current issues in the field are discussed and relevant data are presented.
- The McQueen Psychology Scholarship Fund was established by Dr. Allen Gerson in appreciation of his mentor. This scholarship is designed to support talented general psychology students.
- The Robert L. Solso Award honors outstanding achievements in scientific psychology by Experimental Psychology program graduate students. Dr. Solso established the award prior to his death to recognize students projects which demonstrate the highest level of innovation, thorough scientific investigation and excellence in writing.
- The Willard F. Day Jr. Memorial Scholarship is currently building its fund up to the \$10,000 minimum requirement needed to begin endowment. Dr. Day was a psychology professor at UNR until his untimely death. The scholarship honors junior or senior level undergraduates majoring in psychology and maintaining a GPA above 3.0.
- The Early Childhood Autism Program Endowment provides financial support to advanced graduate students who work with children and families in UNR’s Early Childhood Autism Program. Initially created by a generous donation from a parent of a young child with autism served by the program, the endowment is intended to create permanent support for the program, and as a result will benefit the children with autism and their families.

Continuing support is both necessary and appreciated. If you would like to donate to any of these programs, please send a brief memo and a check to the UNR Foundation, Mail Stop 162, Reno, NV 89557. In the memo, please state the name of the program you would like to support. Stuart Golder, Director of Development (775-784-1222 or sgolder@unr.edu) may also be contacted for additional information about these programs. Thank you.

The UNR Department of Psychology is housed on the third and fourth floors of the Mack Social Science Building.



[Visit the department website](http://www.unr.edu/psych/)
at:
<http://www.unr.edu/psych/>