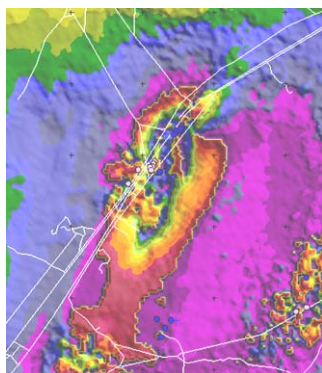


**GEOL 701h**  
Credits: 1-3

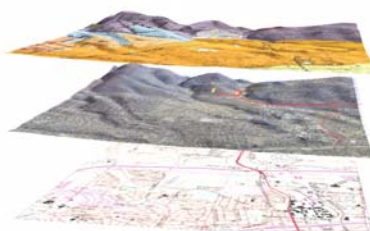
**Advanced Geophysics**  
Instructor: Dr. Gary Oppliger

**Fall 2004**  
Time: TBA

# Geophysical Methods



InSAR Investigations



Topic examples:  
Geophysical Compilations



Gravity Analysis

## in Geologic Investigations

Individual guided student projects

Projects may involve the integration and interpretation of geophysical data for an existing geologic or engineering dissertation study, or the advanced study and application of selected geophysical methods. Advanced study is available in Potential Field, Electromagnetic, and Interferometric Radar methods. Enrollment is limited and the instructor's permission is required.

Instructor: Dr. Gary L Oppliger  
Research Associate Professor  
Arthur Brant Laboratory for Exploration Geophysics  
LME room 304 / Phone: 784-7056  
Email: [oppliger@mines.unr.edu](mailto:oppliger@mines.unr.edu)  
<http://www.unr.edu/mines/able/People/Oppliger/>  
ABLE group: <http://www.unr.edu/mines/able/>