



# Communiqué

Council for Educational Diagnostic Services

A Division of the Council for Exceptional Children

Volume 36, Issue 4, Summer 2009

## President's Message:

David W. Walker

If you attended the Council for Exceptional Children Annual Conference in Seattle, Washington, I hope you had as much enjoyment and learning experiences as I did. If you were unable to make it, you missed a great conference. Let me share some of the highlights with you. First President-Elect Kathie Good really put on a feed at the CEDS Social. The food was great, and the fellow with other CEDS members was even better. Also, Dr. Patricia Frawley, current Chair of the CEDS Professional Standards Committee, was given the James A. Poteet President's Award for outstanding service to the profession of educational diagnostic services. As many of you know, Dr. Frawley has worked very hard over the past 10 years as Chair of this CEDS's committee and as one of the initial organizers to establish the National Certification for Educational Diagnosticians. It was also my pleasure to attend many of the sessions hosted by CEDS on division day.

I would be remiss, and probably severely chastised by my fellow CEDS Officers and Committee Chairs (that's a "ha ha"), if I did not point out how much work was accomplished by your CEDS Board at the conference. The Board has decided to hold the 2010 Annual Conference in San Antonio, Texas, at the Menger Hotel and the 2011 Annual Conference in Kansas City, Missouri. Also, the Board voted to provide greater transparency regarding CEDS business conducted by CEDS Board members. Thus, reports of CEDS Board members will be published on the CEDS website, including membership numbers and the budget. The first posting should occur sometime around the end of May 2009. In closing let me make two announcements.

1. The following positions on the CEDS Board are available:

**Chair of the Archives Committee** – This person is responsible for procuring, cataloging, updating, and preserving documents, papers, convention programs, publications, and other materials that provide information about the history of the division.

**Chair Professional Liaison Committee** – This committee is charged with:

- initiating and maintaining contact with relevant professional organizations at the direction of the president;
- maintaining an awareness of the actions of other professional organizations regarding diagnosis and assessment and informing the president and the Executive Board;
- recommending to the president and the Executive Board actions to be taken by CEDS in cooperation with/against the actions of other professional groups; and
- representing CEDS through correspondence or as an invited respondent in meetings with other professional organizations at the request of the president and the Executive Board.

**Chair of the Research Committee** – This committee is charged with:

- advising the Executive Board regarding appropriate actions to foster and stimulate effective research related to diagnosis and assessment of exceptional populations;
- advising the Executive Board and general membership about areas or topics in need of current research activities and projects and cooperative activities in research with other organizations; and
- evaluating the annual conferences and other activities as designated by the president.



If you are a CEDS member in good standing and are interested in one or more of these positions, send an e-mail message stating your qualifications to me ([David.Walker@usm.edu](mailto:David.Walker@usm.edu)) or send a hard copy letter to: David Walker, P.O. Box 5057, Hattiesburg, MS 39406.

2. The CEDS Annual Conference will be held in Philadelphia, Pennsylvania, on October 29–31, 2009. If you don't attend, you will really miss a great keynote session. In addition, you will miss all those great conference sessions that will be presented by your colleagues, as well as the opportunity to network with other educational diagnosticians, psychometrists, and assessment teachers from all over the country—and the world. By the way, if you have not already submitted your proposal to present at the CEDS conference, I encourage you to do so as soon as possible. Information about conference proposals and registration is provided in this newsletter.

### \*\*\* In this issue \*\*\*

President's Message .....	1
New President, New Congress .....	2
Are You a Pioneer? .....	2
Member Profile .....	3
Election Results .....	3
CEC Representative Assembly .....	4
Professional Standards Committee .....	4
CEDS Annual Conference .....	5
CEDS Annual Conference Registration Form .....	6
Partners Educating Today's Students Conference .....	7

## New President, New Congress: What's Next?

**Stephen Walker**, *CEDS Governmental Relations Committee Chair*  
& *Children's Action Network Coordinator*

Once again, support for increased funding for the **Jacob Javits Act** is getting attention on Capitol Hill. Javits is the only U.S. federal program specifically dedicated to meeting the unique learning needs of students with gifts and talents. However, in 2007 less than 3 cents out of every \$100 of the federal K–12 education budget was devoted to the educational needs of gifted and talented students. To remain globally competitive, our nation must increase its investment in gifted education. If you are interested in signaling your support for increased federal funding for gifted programs, CEC has letter templates on the Policy and Advocacy webpage (<http://www.cec.sped.org>).

On February 17, President Obama signed into law **The American Recovery and Reinvestment Act** (ARRA), better known as the economic stimulus package. This act doubled the federal government's investment in special education. ARRA marks a significant step towards full funding for IDEA and increased the federal share from 17.2% to 34.2% of the 40% goal. Now, can we maintain the momentum?

Congressman John Yarmuth (D-KY) is circulating a letter to his colleagues asking for their support for **Higher Education Opportunities for Students with Disabilities and Future Educators**. This legislation seeks to increase postsecondary opportunities for students with disabilities, better prepare general education teachers to address the unique needs of students with disabilities in elementary and secondary school, and address the shortage of special education teachers. To express your support, contact your Congressional Representatives. To get their contact information, go to the CEC Policy and Advocacy webpage (<http://www.cec.sped.org>).

Reauthorization of the **Elementary and Secondary Education Act** is on the horizon. This law will be before Congress sometime this year, and all of us will need to communicate with our Congressional representatives as this legislation begins to move forward. As the CEDS Children's Action Network Coordinator, I will monitor this legislation as it moves through the Congress and communicate with you through this newsletter on important changes that will be made, but it will be up to each of you to become personally involved and contact your representatives regarding your views/preferences on the reauthorization. For up-to-date information on legislation affecting special education, go to the CEC Policy and Advocacy webpage (<http://www.cec.sped.org>).

---

## Are You a Pioneer?

The CEC Pioneers Division (CEC-PD) supports CEC's programs and activities. Membership in CEC-PD is open to anyone who has been a member of CEC for at least 20 years or is a past president of CEC. Currently, CEC-PD subdivisions are active in California, Florida, Georgia, Illinois, Kentucky, Ontario, and Pennsylvania. For the last two years, the Pioneers have participated in a mentoring project with members of SCEC. There are 31 mentors and 53 mentees in the project from the University of Cincinnati, Canisius College, Georgia College, Georgian Court College, Southern Illinois University-Edwardsville, and Hood College. Increasing the number of mentees and student chapters has already been requested. Any member of CEDS who meets the above criteria and is interested in participating next year may contact [pamelagillet@aol.com](mailto:pamelagillet@aol.com) for additional information.

**Leann DiAndreth-Elkins,**  
Editor

*Communiqué* is the official quarterly newsletter of the Council for Educational Diagnostic Services (CEDS), a division of the Council for Exceptional Children. Subscriptions are by membership to CEDS. Web postings are made thirty days after the newsletter is sent to members. The editor encourages responses, ideas, and inquiries. Submissions of previously unpublished material are welcome for consideration.

### Editorial Address:

Leann DiAndreth-Elkins •  
CEDS Editor • College of  
Education • Box 41071 •  
Lubbock, TX 79409-1071  
Phone: 806-742-1997 x286  
Fax: 806-742-2179  
E-mail: [leann.elkins@ttu.edu](mailto:leann.elkins@ttu.edu)

### Assessment for Effective Intervention:

The official quarterly research journal of CEDS is *Assessment for Effective Intervention*, provided through CEDS membership. The primary purpose of the journal is to publish empirically sound manuscripts that have implications for practitioners. Submissions are encouraged; guidelines are available at <http://aei.sagepub.com>

### CEDS Web site:

[www.unr.edu/educ/ceds/](http://www.unr.edu/educ/ceds/)

### CEDS Business Address:

1110 N. Glebe Road  
Arlington, VA 22201

### Disclaimer Statement: Newsletter & Official Publications

*The opinions and information contained in the articles in this publication are those of the authors of the respective articles and not necessarily those of the editor of the CEDS newsletter or the Council for Educational Diagnostic Services. Accordingly, CEDS assumes no liability, loss, or risk that may be incurred as a consequence, directly or indirectly, of the use and application of the contents of the publication.*

## Member Profile: Eileen Sanchez

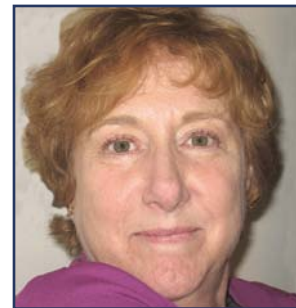
### Connie Nielson *Membership Chair*

The 2009 CEDS Annual Conference will occur on October 29-31 in Philadelphia. Chair for the program committee and local arrangements is **Eileen Sanchez**, whose passion for special education started when she volunteered as a teenager at a summer program for students with severe disabilities. She says the parents and students taught her how to look beyond the disability and see the person.

Eileen completed her B.A. at Newark State College (Kean University) and her Ed.M. at Rutgers University. She has been a general education teacher at the elementary level, a special education teacher at the preschool through middle school levels, a learning disabilities consultant, an adjunct professor, a staff development specialist & curriculum resource person, a child study team coordinator, and a Pre-K–12 special education supervisor. Her current position as a district supervisor allows her to work “hand in glove” with educational diagnosticians and the teaching staff to meet accountability standards through the use of a Growth Model for each student. This model allows Eileen to focus on various types of assessment to guide and inform instruction and build on the strengths of the student.

Eileen has served on the Executive Board of the Association of Learning Consultants in several positions. For her service, she received the Anita McKeon Award and was honored as the Member of the Year in 2007. She was awarded the Professionally Recognized Special Educator (PRSE) Certificate for Educational Diagnosis by CEC in 1999 and met all prerequisite criteria and passed the exam to become a Nationally Certified Educational Diagnostician (NCED) in 2007.

Eileen and her husband have three adult daughters, two sons-in-law, and two grandchildren. Becoming a grandmother awakened an old dream, and she is now writing children’s books. Though not yet published, she plans to achieve that goal. Eileen also enjoys gatherings with family and friends, quiet walks, reading, and planning vacation trips. Past vacations included visits to small inns in Spain, Ireland, Vancouver Island, and Grand Manon Island. This summer the Sanchezs are celebrating their 40th wedding anniversary with a trip to Italy. We can all ask her about it in Philadelphia!



## Election Results

### Carol A. Layton *Past President*

During the spring, CEDS conducted its first electronic ballot for the secretary and treasurer positions. The voting return proved to be an overwhelming success. Thank you to all of the candidates for their willingness to serve and to the members for voting and extending a voice in leadership positions. Allow me to introduce our elected officers.

Re-elected for a second term as **treasurer, Brenda Gilliam** is a professor of special education at The University of Texas–Tyler, where she served as chair of the Department of Early Childhood, Reading, and Special Education in 2007–2008 and is currently coordinating the Special Education and Educational Diagnostician programs. Brenda’s background includes 5 years as a special education teacher and 10 years as an educational diagnostician prior to shifting into higher education. She has an extensive history of leadership in special education, serving as CEC governor from Texas, Texas CEC President, and Small Special Education Programs Caucus (SSEPC) Chair in CEC’s Teacher Education Division. She has experience working with budgets and financial data, having served as treasurer of Rose



City Phi Delta Kappa and the SSEPC. Brenda has been a consultant in assessment of English language learners for the past 20 years and has given numerous presentations on this topic. She is an advocate for assessment professionals and the CEDS organization.

Our newly elected **secretary** is **Joan Hofmann**, an associate professor of special education at Saint Joseph College in West Hartford, Connecticut. Her background and experience in special education is extensive. Since her days as a student at the University of North Carolina–Chapel Hill, she has been a public school special educator and special education administrator, and now prepares general educators and special educators, which in Connecticut includes educational assessors/diagnosticians. Joan has been a member of CEC for more than 30 years and a member of CEDS for 15. She is currently serving her second term as CEDS Delegate Assembly Representative. In addition to being a member of the CEDS Board for the past 7 years, she has held many specific roles, including a 3-year appointment as *Communiqué* newsletter editor, committee memberships, and chair of annual CEDS conferences in Albuquerque, New Mexico, and Arlington, Virginia. Joan will begin her term as secretary on July 1, 2009.



## CEC Representative Assembly

Joan Hofmann & Carol Layton

*CEDS Delegates*

At the CEC Representative Assembly (RA) in Seattle, the 2009–2011 Strategic Plan was distributed and a collaborative, in-depth discussion was held regarding Goal 1. The list of goals follows.

- **Goal 1:** To improve the conditions of teaching and learning and support the highest quality of services for individuals with exceptionalities
- **Goal 2:** To foster and effectively communicate the use of evidence-based practices in general and special education and early intervention.
- **Goal 3:** To foster mutual understanding and reciprocal partnerships internationally, supporting professionals in improving the lives of individuals with exceptionalities.
- **Goal 4:** To promote growth and diversity in membership by building a more engaged community to enhance professional practice, learning, leadership, and collaboration.
- **Goal 5:** To advance governmental policies impacting the teaching and learning of individuals with exceptionalities and the practice of professionals who work on their behalf.
- **Goal 6:** To continuously improve organizational performance and fiduciary effectiveness to provide value to members and customers.

In conjunction with an update of *What Every Special Educator Must Know: Ethics, Standards, and Guidelines for Special Educators* (last updated in 1983), a revision of the current *CEC Code of Ethics for Special Educators and Standards for Professional Practice for Special Educators* is underway. According to materials distributed to the RA, the following are proposed changes to the latter document:

- Addition of five ethical principles, including a “do no harm” principle
- Revision of the title from *Code* to *Principles* to reflect that the practice standards are based on and flow from the ethical principles
- Inclusion of principles and practice standards related to *advocacy* and the *profession* within related sections
- Addition of language throughout the principles and practice standards to assure that the CEC commitment to diversity and issues of access, acceptance, social justice, and equity are manifest
- Reorganization of the proposed practice standards section headings to reduce the number of heading levels and make them parallel

- Revision of practice standards to make them parallel and to give them the consistent perspective of the practicing professional
- Addition of new headings and practice standards addressing practice in relation to special education paraeducators, research, and case management
- Removal of outdated language
- Consistency of style and language with those of *What Every Special Educator Must Know*

To further the revision, RA delegates provided input from their units and also discussed the proposed practice standards in each section: For Teaching and Assessment, For Licensure and Employment, For Professional Development, With Professional Colleagues, With Paraeducators, With Parents and Families, For Research, For Case Management, For Non-Educational Supports.

The *Pathways to Leadership Report*, developed by the 2008 Nominations Committee, had been presented to the CEC Board at the January 2009 meeting. In conjunction with this initiative, the RA delegates collaboratively discussed strategies to recruit and prepare new leaders in CEC, plan for succession, and grow leadership.

## Professional Standards Committee

Patricia Frawley

*Chair*

The Knowledge and Skills Subcommittee of CEC’s Professional Standards and Practice Committee met during the recent CEC conference in Seattle. Richard Mainzer updated the committee on recent proceedings from CEC, including an upcoming revision of the *Code of Ethics*. Several sets from other divisions are approaching the final stages of acceptance, including the set for teachers of individuals with deaf/blindness, which had its final review. Future validation studies will encompass the sets for inclusion specialist, special education technology specialist, and learning disabilities specialist. Early in 2010, the validation study for special education paraeducator will be reviewed.

Polly Parrish, Barbara Becke-Cottrill, and Brenda Myles from the Autism Society of America were present to review concerns and coordination with the validation studies. All validated sets were reviewed to compare individual standards with those from both the individualized general curriculum and the individualized independent curriculum. Common to all standards at both the general and individualized levels was a need to incorporate technology, literacy, and numeracy. Incorporating strategies at all levels was also acknowledged.

The latest edition of the *Red Book: What Every Special Educator Needs to Know* is available online from CEC. This latest edition is a result of many years of work from all divisions and provides validated standards for the advanced common core for educational diagnosticians.



# CEDS Annual Conference: Assessment: A Key to Independence

Philadelphia, PA ☆ October 29–31, '09



## CALL FOR PROPOSALS

The CEDS Conference Committee seeks proposals that will address a variety of relevant issues, including, but not limited to:

- ☆ Best Practices in Identification of Learning Disabilities in English Language Learners
- ☆ Role of Assessment in Disproportional Representation of Minority Students
- ☆ Functional/Authentic Assessment as Part of Eligibility Determination Decisions
- ☆ Progress Monitoring/Curriculum-Based Data Management
- ☆ Functional/Authentic Assessment in Autism Diagnosis
- ☆ Functional/Authentic Assessment in Report Writing
- ☆ Best Practices in Identification of Math Disability
- ☆ Best Practices in Identification of Writing Disability
- ☆ Autism
- ☆ AD/HD
- ☆ Learning Disabilities
- ☆ Emotional/Behavioral disorders
- ☆ Assessment and Accountability (IDEA 2004 & NCLB)
- ☆ Assessment and the IEP Process/Product
- ☆ Response to Intervention
- ☆ Early Childhood Assessment
- ☆ Test Development/Construct

*Proposal Guidelines:* Please include a cover sheet, conference program description, and an abstract.

*Cover Sheet:* Include the title of the proposal and names, titles, addresses, e-mail addresses, telephone and fax numbers of the session leader and other participants.

*Conference Program Description:* 50-word description of the presentation

*Abstract:* 300–500 words that include:

- ☆ Statement of the issue and its relevance to the field
- ☆ Objectives of the presentation
- ☆ Audience and how the information will be conveyed
- ☆ Usefulness to practitioners
- ☆ Type of presentation: lecture, demonstration, poster, workshop
- ☆ Time requested: one, two, or three hours

**Deadline: May 31, 2009**

Submit proposals to [Eileen\\_Sanchez@monet.prs.k12.nj.us](mailto:Eileen_Sanchez@monet.prs.k12.nj.us)

## SAVE THE DATE!

Sessions on assessment, research, overrepresentation of minorities in special education, new assessments, IDEIA, meet national colleagues, and more!

### Keynote:

*“There is NO Master Key!*

*Unlocking Answers to a National Crisis—  
The Overrepresentation of Minority Students in Special Education”*

**Jack Jorgensen, PhD**  
Assistant Dean  
School of Education  
*University of Wisconsin–Madison*

### Topic Sampler:

- ☆ Assessment: Keying in on Early Childhood Screening
- ☆ Educational Diagnosticians as Researchers
- ☆ Data Analysis and Interpretation Methods
- ☆ Utilizing Professional Judgment:  
The Key to Determining SLD Eligibility
- ☆ Train the Trainers Workshop on Confidentiality
- ☆ Conducting, Writing, and Defending Assessment Reports
- ☆ Publishers: New Test Overviews—  
Key Math III, WIAT III

### NCED Exam:

**October 28 [<http://ncedb.org>]**



*Philadelphia offers attendees extraordinary art, restaurants, and museums; the Historic District; shopping in Rittenhouse Square; waterfront views; and more. From the Reading Market to the Liberty Bell to the Independence Visitor Center to the Philadelphia Art Museum and Rocky, this walkable city has something for everyone!*



Conference updates can be found  
on the CEDS website  
(<http://www.unr.edu/educ/ceds>)

# **CEDS Annual Conference: Assessment: A Key to Independence**

**Philadelphia, Pennsylvania • October 29–31, 2009**

## **REGISTRATION FORM**

Pre-Registration Postmark Deadline: *October 3, 2009*

Name: \_\_\_\_\_

Name as you wish it to appear on the badge, if different: \_\_\_\_\_

Address: \_\_\_\_\_ City: \_\_\_\_\_ State: \_\_\_\_\_ Zip: \_\_\_\_\_

Phone: (O) \_\_\_\_\_ (H) \_\_\_\_\_ Email: \_\_\_\_\_

Registration fee for full 3-day conference includes ALL workshops. Admittance to workshops is on a first-come, first-served basis.

### **Registration Fees:**

#### **Type**

	<b>Pre-Registration, Rcd. by 10/3/09</b>	<b>On-Site, After 10/3/09</b>
CEDS Regular Member [ID # _____]	\$190 _____	\$205 _____
Non-Members	\$235 _____	\$260 _____
Student Rate*	\$100 _____	\$120 _____
Single-Day Registration [Circle day: Thurs. Fri. Sat.]	\$120 _____	\$135 _____

\*To receive student rate, you must include a photocopy of your CEC student ID card.

### **Group Pre-registration Information:**

- ☆ Groups of 3–4 are eligible to receive a 10% discount (regular member \$171; nonmembers \$234).
- ☆ Groups of 5 or more are eligible to receive a 20% discount (regular member \$152; nonmember \$208).
- ☆ Discount applies **ONLY** when all pre-registration forms arrive together as a packet with full payment or a purchase order.

### **Payment Options:** (Credit cards are **NOT** a payment option)

Enclosed is a check payable to CEDS for \$ \_\_\_\_\_

Enclosed is Purchase Order # \_\_\_\_\_ [Please indicate the name(s) of those registering together on the PO.]

### **Send Registration Forms and Payment to:**

Dr. Brenda Gilliam, Treasurer  
The University of Texas at Tyler  
3900 University Boulevard, Tyler, TX 75799

### **Refunds:**

Refunds may be requested; however a \$20.00 processing fee will be charged.

**Refunds will NOT be honored after September 30, 2009.**

### **Hotel:**

Crowne Plaza Hotel, 1800 Market Street, Philadelphia, PA 19103

Phone: 215-561-7500

Website: <http://www.crowneplaza.com/philadelphia-centercity>

\$169 per night for single, double, triple, or quad

Please use the code **COU** for online registration, or call 866-618-0410 and request the Council for Educational Diagnostic Services conference rate when making the reservation. **Rate available until 9/27/09.**



# Partners Educating Today's Students:



## MO-DLD & MO-CEDS 19th Annual Cross-Categorical Mid-Summer Conference

Presented by  
**Missouri Division of Learning Disabilities**  
**Missouri Council for Educational Diagnostic Services**

Concurrent Sessions will follow these strands:

- Strategies
- Assessment
- Curriculum Based Measurements
- Eligibility
- Differentiated Instruction
- Hands-On Learning

Pre-Registration until June 5, 2009

- Member \$50
- Non-member \$60
- Undergrad Student \$25

**After June 5, 2009, members and non-members pay an additional \$15 late fee.**

At the included Luncheon, we will present:

- Year of the Photographer
- General Educator Awards
- Door Prizes

Silent Auction will be from 8:00 to 3:45

**When:** Thursday, July 16, 2009  
8:00 am–4:00 pm  
Registration opens at 7:30 am

**Where:** Stoney Creek Inn  
2601 South Providence  
Columbia, Mo. 65203  
(573) 442-6400  
1-800-659-2220

Make your reservations directly with Stoney Creek Inn. A block of rooms has been reserved at a special conference rate of \$79.00 plus tax per night. Identify yourself as a Special Services Conference attendee to receive the special rate.

**Reservations must be made before June 16.** Room registration fees are each participant's responsibility.

## REGISTRATION FORM

Name: \_\_\_\_\_

Address: \_\_\_\_\_

City: \_\_\_\_\_

State: \_\_\_\_\_ Zip: \_\_\_\_\_

Email: \_\_\_\_\_

Phone: \_\_\_\_\_

Amount Enclosed: \_\_\_\_\_ (Cash, Check or PO)

PO # required \_\_\_\_\_

MO-CEC member : \_\_\_\_\_ Yes \_\_\_\_\_ No

Are you staying at Stoney Creek Inn?

\_\_\_\_\_ Yes \_\_\_\_\_ No

If yes, make sure you have called for reservations.

**Complete, detach, and mail this form with the appropriate fees to:**

**MO-DLD/CEDS 2009 Conference**  
**Sarah Bates, Registrar**  
9743 Co. Road 458  
Mokane, Mo 65059  
(573) 676-5320  
[sarahbates@hotmail.com](mailto:sarahbates@hotmail.com)

**or fax with PO # to:**

**Penny Fadler**  
(573) 696-7328