

ARE THEY GETTING IT?

Enhance Your Assessment
Techniques

with



CLICKERS

Personal
Response
Systems

Teaching and Learning Technologies ~ University of Nevada, Reno



Teaching and Learning Technologies

Greg Gardella

Alina Solovyova-Vincent



Agenda

- Overview of PRS technology
- Hands-on demonstration
- Support and training at UNR
- Using clickers in real situations
- Q and A

Equipment

“Smart” Classrooms:

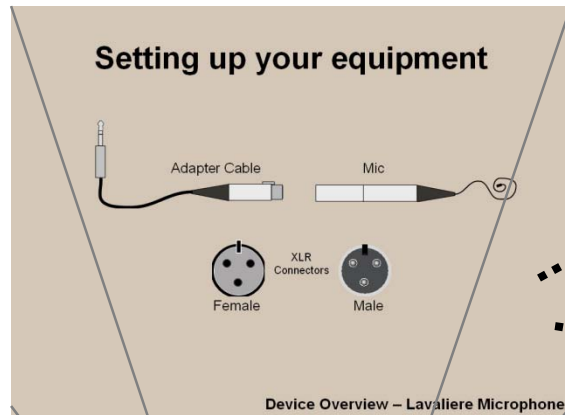
- Classroom computer
- Data/video projector
- RF receiver
- PRS Software

Students:

- RF remote Clickers

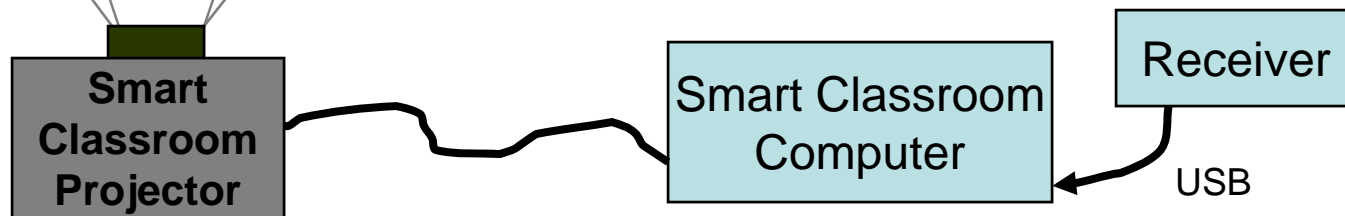
Instructor:

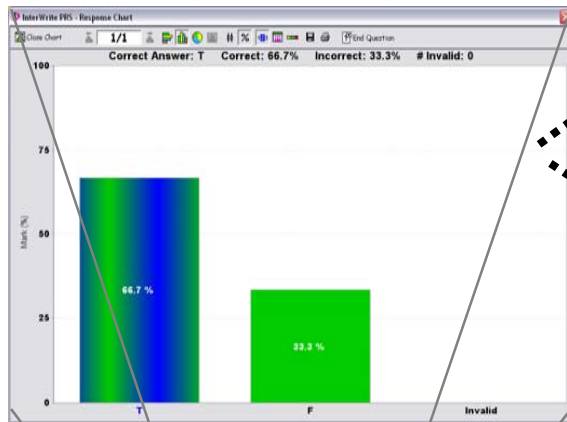
- Flash drive
- PRS Software



“O.K., We’re going to see how much of this you are getting.... Take out your clickers and answer the following question:”

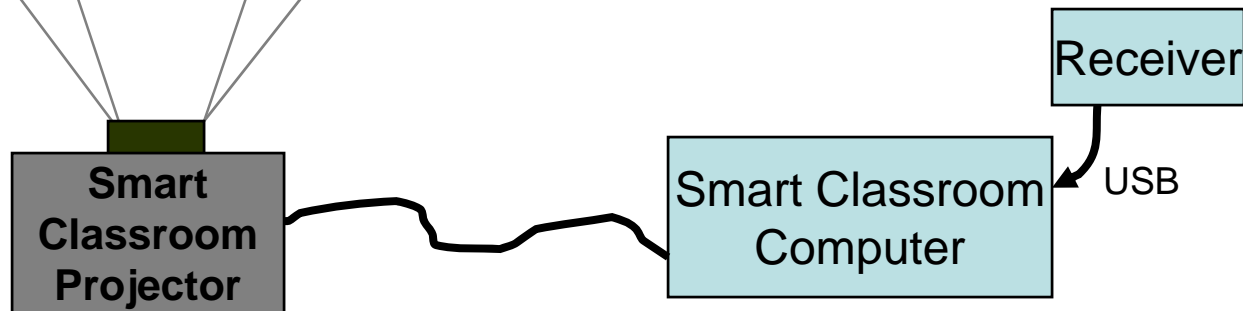
“True or False – These two connectors will fit together?”





“Time is up...Let’s see how you did.”

“The answer was True and 1/3 of you got it wrong. Let’s spend a few more minutes to see if we can get the concept across.”



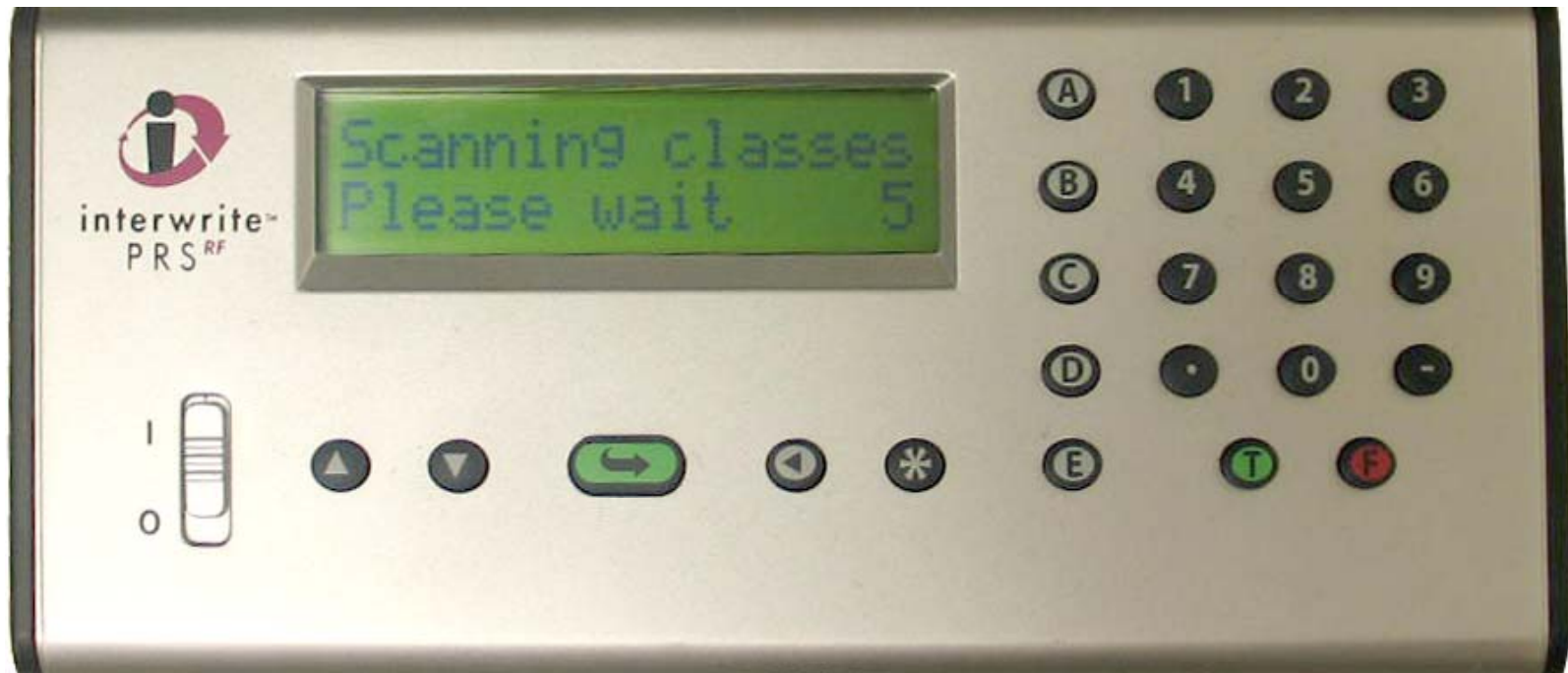


Benefits of Clickers

- Engages students in the learning process
- Provides real-time feedback
- Facilitates responsive and flexible teaching
- Makes class more dynamic, active and fun
- Useful as a polling tool in non-classroom setting

Standard University of Nevada Clicker :

InterWrite Learning PRS



InterWrite Virtual PRS

File View Tools Help

interwrite-
PRS

ANS: 1
Enter Answer

Disconnect

↑ ↓ → ← *

A B C D E

1 2 3
4 5 6
7 8 9
0

1 2

Connected (TEST11) - Question started, remaining time: 00:09

Zoom Out Zoom In



Which of the following is not a primary color?

1. Yellow
2. Green
3. Blue
4. Red

i

The image shows a screenshot of the InterWrite Virtual PRS software interface. At the top, there is a title bar with the text "InterWrite Virtual PRS" and standard window control buttons (minimize, maximize, close). Below the title bar is a menu bar with "File", "View", "Tools", and "Help". The main interface area is divided into several sections. On the left, there is a logo for "interwrite-PRS" featuring a stylized figure. In the center, a green rectangular box displays "ANS: 1" and "Enter Answer". To the right of this box is a numeric keypad with buttons for digits 1-9, 0, and a decimal point, along with buttons labeled A, B, C, D, and E. Below the keypad are several navigation buttons: "Disconnect", a set of four arrow buttons (up, down, right, left), and a star button. A status bar below the keypad shows "Connected (TEST11) - Question started, remaining time: 00:09" and two "Zoom" buttons ("Zoom Out" and "Zoom In"). The main content area is a large white rectangle containing the question: "Which of the following is not a primary color?" followed by a numbered list: "1. Yellow", "2. Green", "3. Blue", and "4. Red". A small "i" icon is visible in the bottom-left corner of the main content area.

Join the Class

1. Power on your Clicker.
2. Autoscan will begin. Once the class is found, press  to join.
3. The **ANS:** field will display indicating that you are ready to participate in a PRS session.
4. Are you ready? Press **T**(true) or **F**(false) and then “Enter”  .





Supported Questions

- True/False
- Multiple Choice
- Numeric
- Short answer
- Series
- Survey

Supported Modes

- Quiz
- Poll
- Homework
- Test (self-paced)



Features of PRS

- Integration with PowerPoint
- Textbook publishers' questions can be imported
- “On-the-fly” questions
- Instant grading
- Instant response graph
- Multiple reporting options
- Integration with WebCT



Support for Instructors:

- Demonstration workshops
- Hands-on workshops
- Demo Kit
- Trial Class Kit
- Individual or group consultations
- Support with the first classes
- Help with planning for the semester (syllabus, flash drive, bookstore, publishers, classroom scheduling)